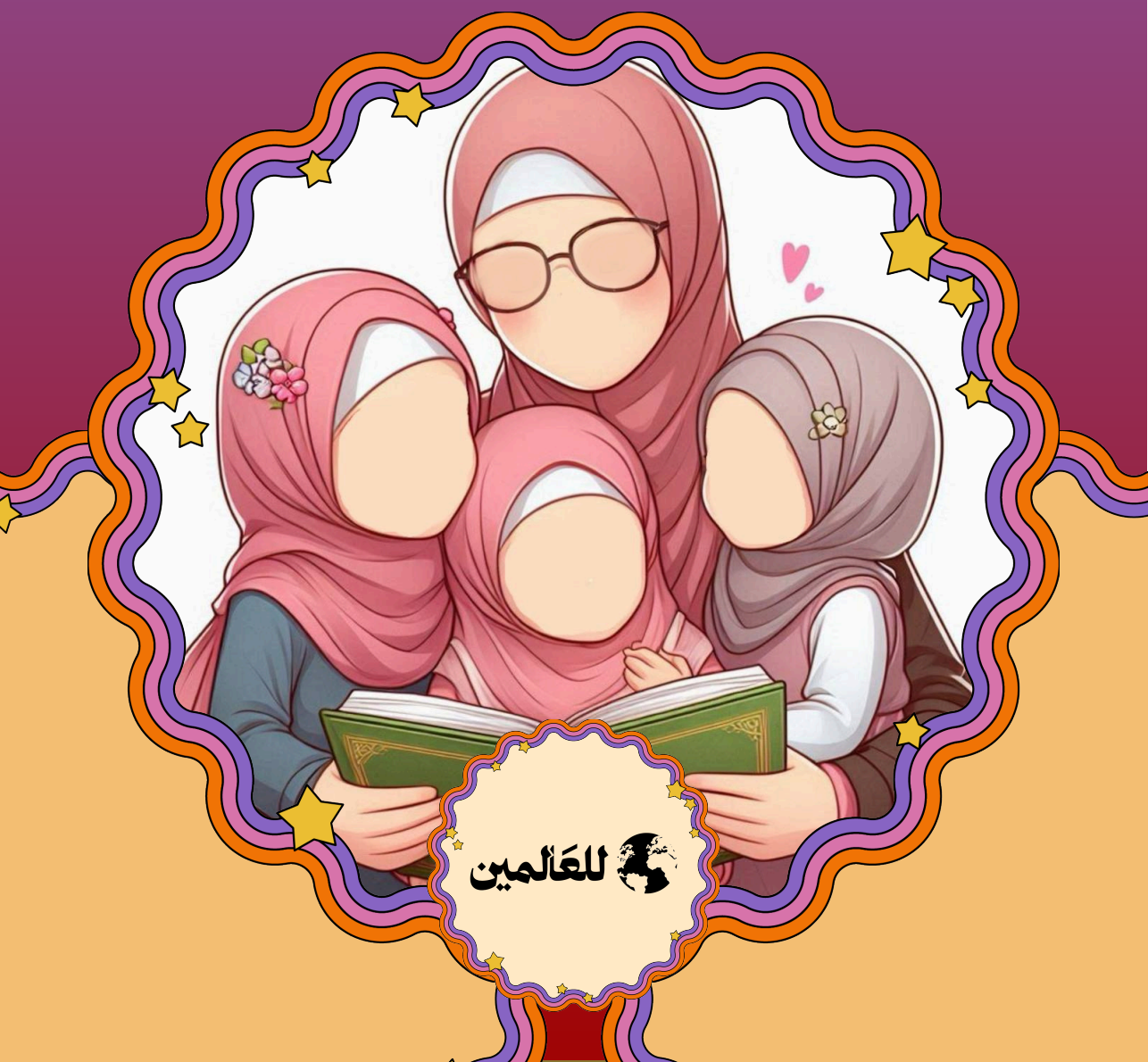


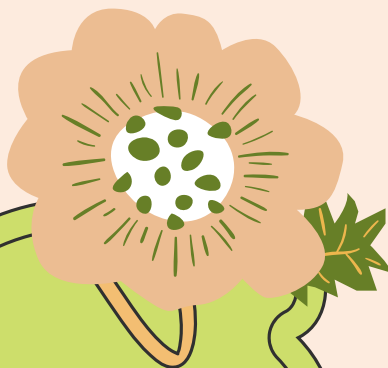
ASMA BINT ABI BAKR

MAY ALLAH BE PLEASED WITH HER

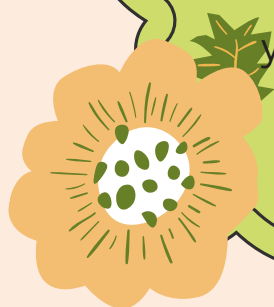
STORIES OF ROLE MODELS
PRELIMINARY LEVEL



لِلْعَالَمِينَ

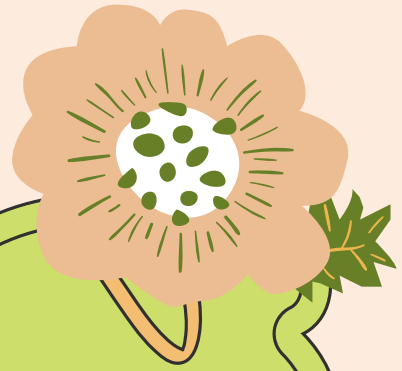
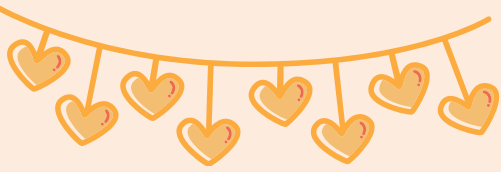


In the early days of Islam, Asmaa bint Abi Bakr Al-Siddiq - may Allah be pleased with them both - was a young Muslim girl living in Mecca with her family.

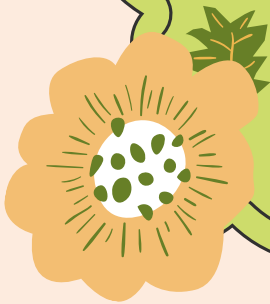


Asmaa loved Allah and His Messenger and was aware that the disbelievers were conspiring against Islam and the Muslims.



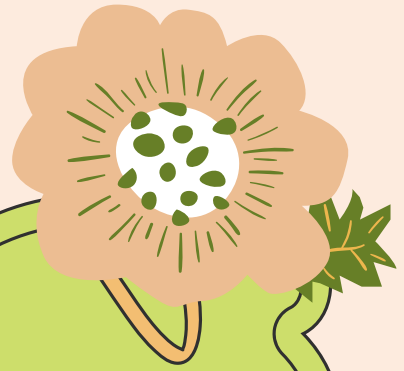
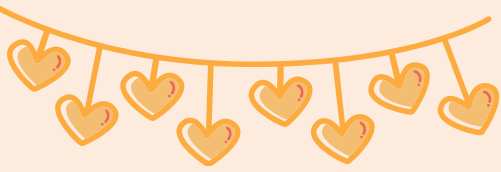


Her father, Abu Bakr, knew that Asmaa was a girl of strong faith and dearly cherished Islam.

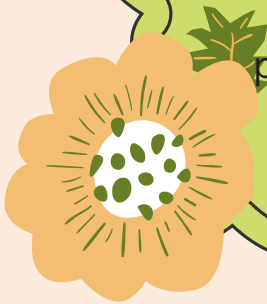


When the Prophet - peace be upon him - decided to migrate to Medina with her father on a dangerous journey that required them to hide in a cave until the pursuit by the disbelievers ceased,



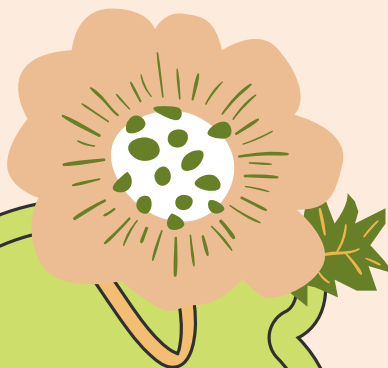


it was necessary for someone trustworthy to deliver food to them in the cave. That trustworthy person was Asmaa bint Al-Siddiq.

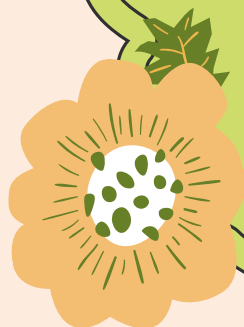


Asmaa would carry food and water to the Prophet - peace be upon him - and her father every day in secret, without anyone knowing.



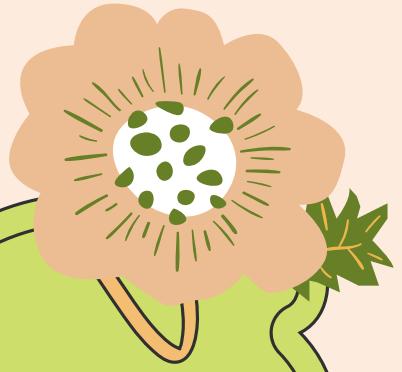
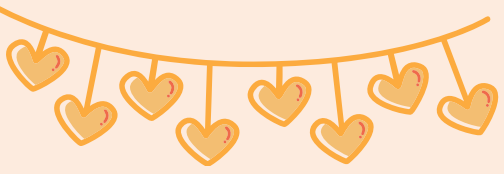


She was discreet and clever in her movements, ensuring that the disbelievers wouldn't notice her actions.



She wore a belt, from which she ingeniously fashioned two belts to carry provisions to the Cave of Thawr, where the Prophet and her father were hiding, earning her the nickname 'the one with the two belts.'

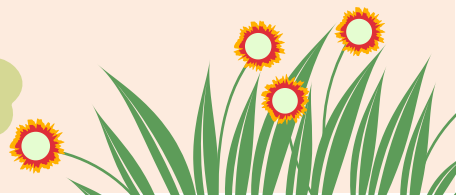


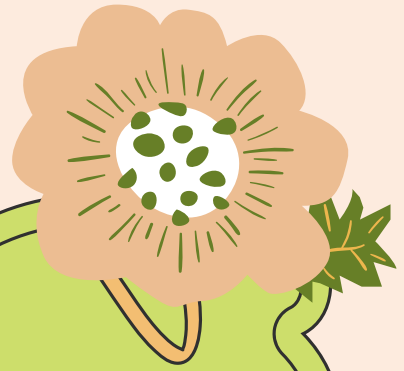
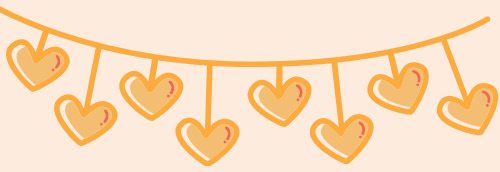


The Prophet and his companion,
Abu Bakr, successfully migrated to
Medina in safety,

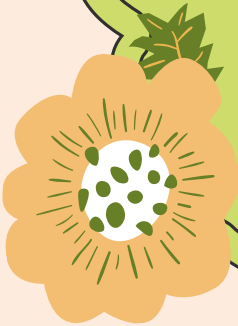


and Asmaa later joined them
without the disbelievers
discovering their plan to migrate.





Asmaa lived in service to Islam and
gave birth to one of the great
knights of Islam, Abdullah
ibn Az-Zubair,



whom she raised with love for
Allah, His Messenger - peace be
upon him - and support for Islam.
He became a great champion for
his religion.

May Allah be
pleased with
Asmaa



للعالمين



Stories of Role Models
(Preliminary Level)