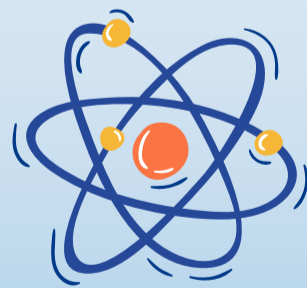
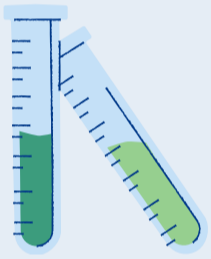


للعالمين 

# Book of Sciences

Introductory Level



# Book of Sciences

## Introduction

Indeed, all praise is due to Allah.

We praise Him, seek His help, and ask for His forgiveness. We seek refuge in Allah from the evils of ourselves and the misdeeds of our actions. Whomever Allah guides, no one can mislead, and whomever He allows to stray, no one can guide. I bear witness that there is no deity worthy of worship except Allah, alone without partner, and I bear witness that Muhammad is His servant and messenger.

May Allah's peace and blessings be upon him, his family, and all his companions. To proceed:

This book presents basic information in science to the child, through which they can observe Allah's creations, learn about their own body and the universe around them, and cultivate their curiosity to explore and learn about themselves and their surroundings.

## The Creatures of Allah the Exalted:

Allah, the Almighty, created the vast universe in which we live, including the sky above us and the earth we walk upon.

Allah raised the sky without visible pillars and adorned it with stars, planets, the sun, and the moon.

He created many different creatures on the earth.

Among them are **living** beings that need water to live, breathe, and grow, and there are **non-living** things, which have no life in them.

Living creatures include humans, animals, birds, and plants.

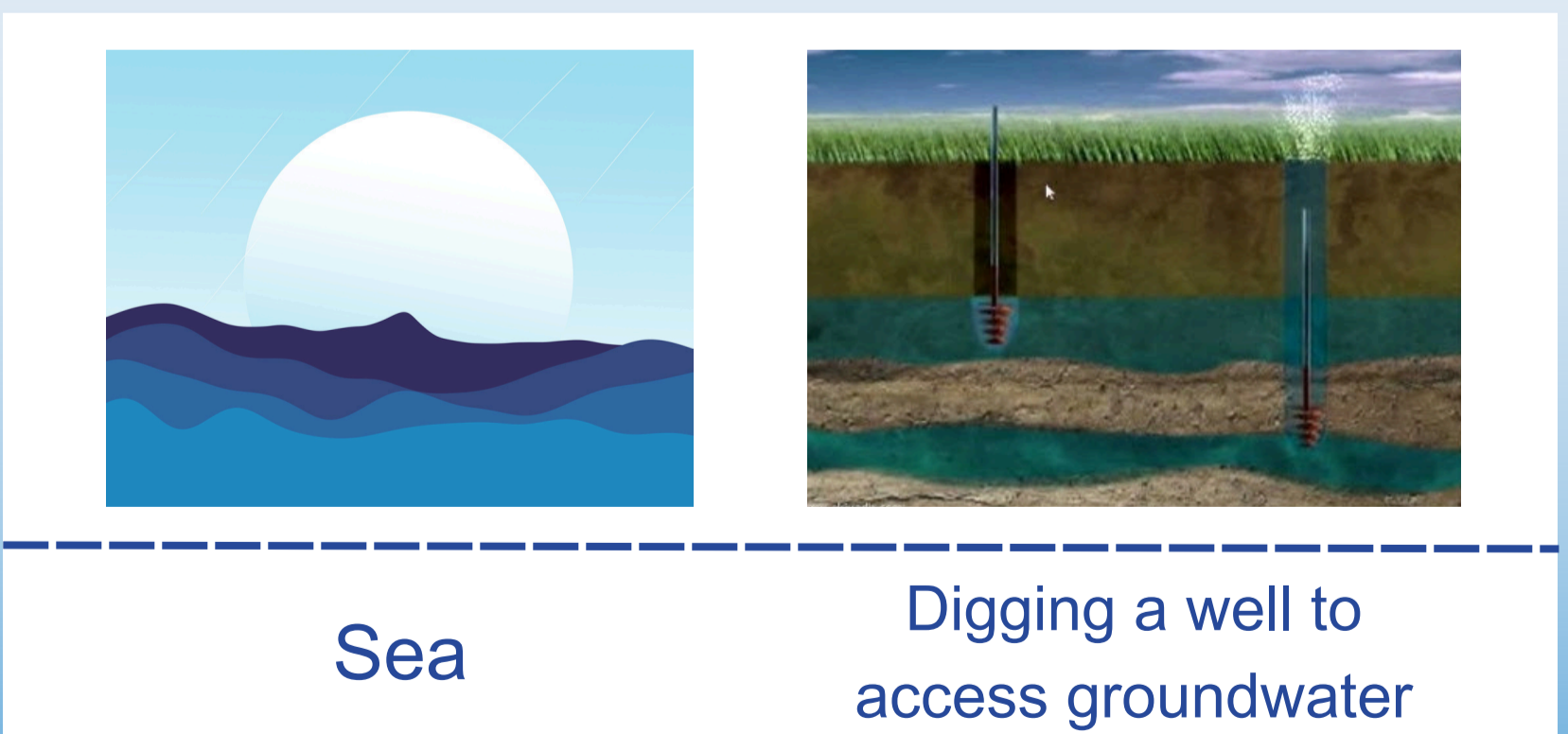
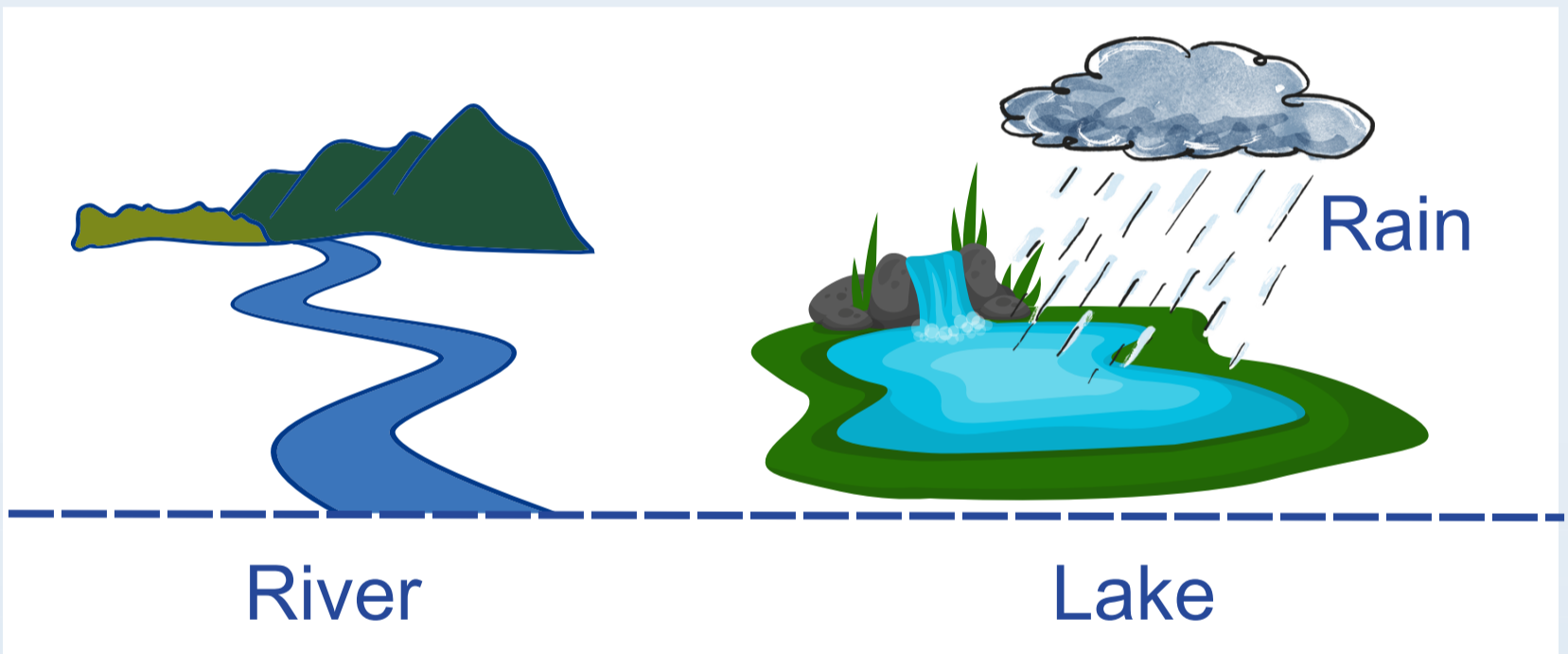
Non-living things include mountains, seas, soil, and rocks.

Allah has made all these creations subject to the service of human life so that humans may worship Allah alone, without any partners, and so they may glorify Allah and His power.

# Water:

Allah created water and made every living thing depend on it for life.

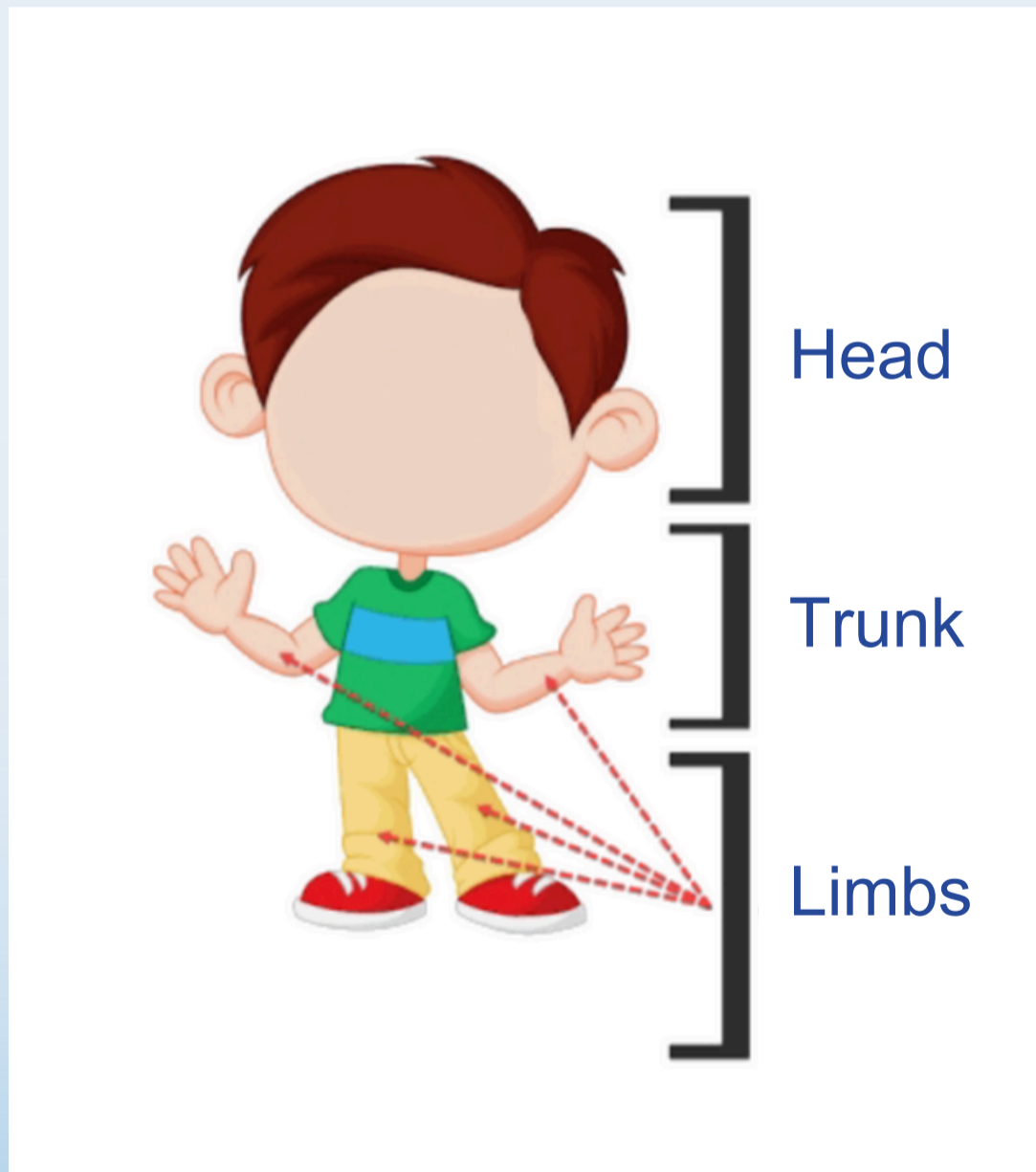
Water comes from rain, rivers, lakes, seas, and wells that humans dig deep into the earth to extract groundwater, which accumulates beneath the earth's surface.



# Humans:

Let us contemplate the human body..

The human body consists of three main parts: the head, the trunk, and the limbs.



## 1- The Head:

The head is located at the top of the body and contains the eyes, ears, nose, mouth, face, forehead, eyebrows, and hair. Inside it, there is the human brain, which we cannot see with the naked eye, but it controls all the functions of the body.

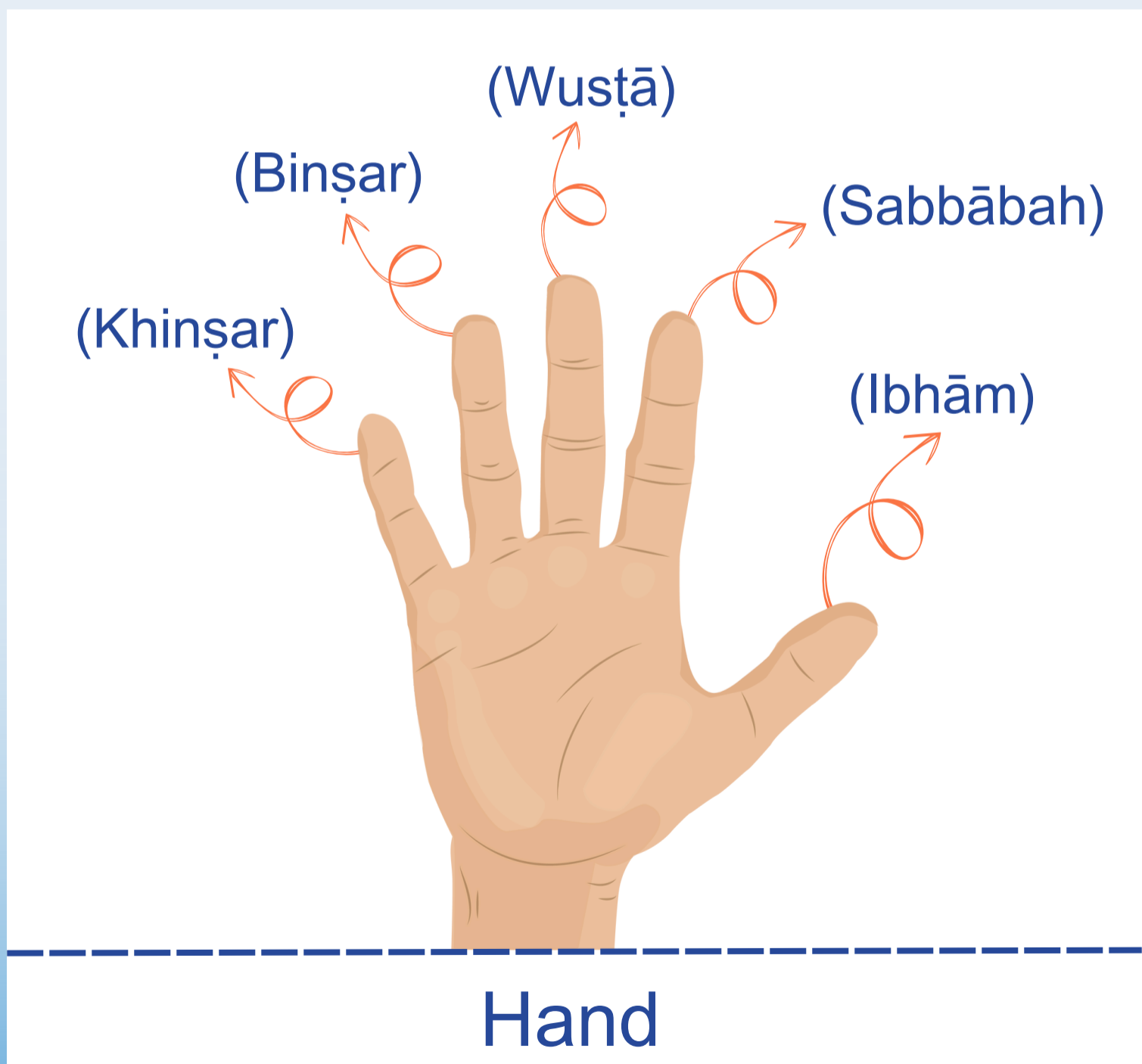


The Head

## 2- The Limbs:

The limbs consist of the hands and feet, which enable humans to move and manipulate objects.

The human body has a right hand and a left hand, a right foot and a left foot. Each hand and foot contains fingers or toes. There are 5 fingers on each hand and 5 toes on each foot.



# Hand

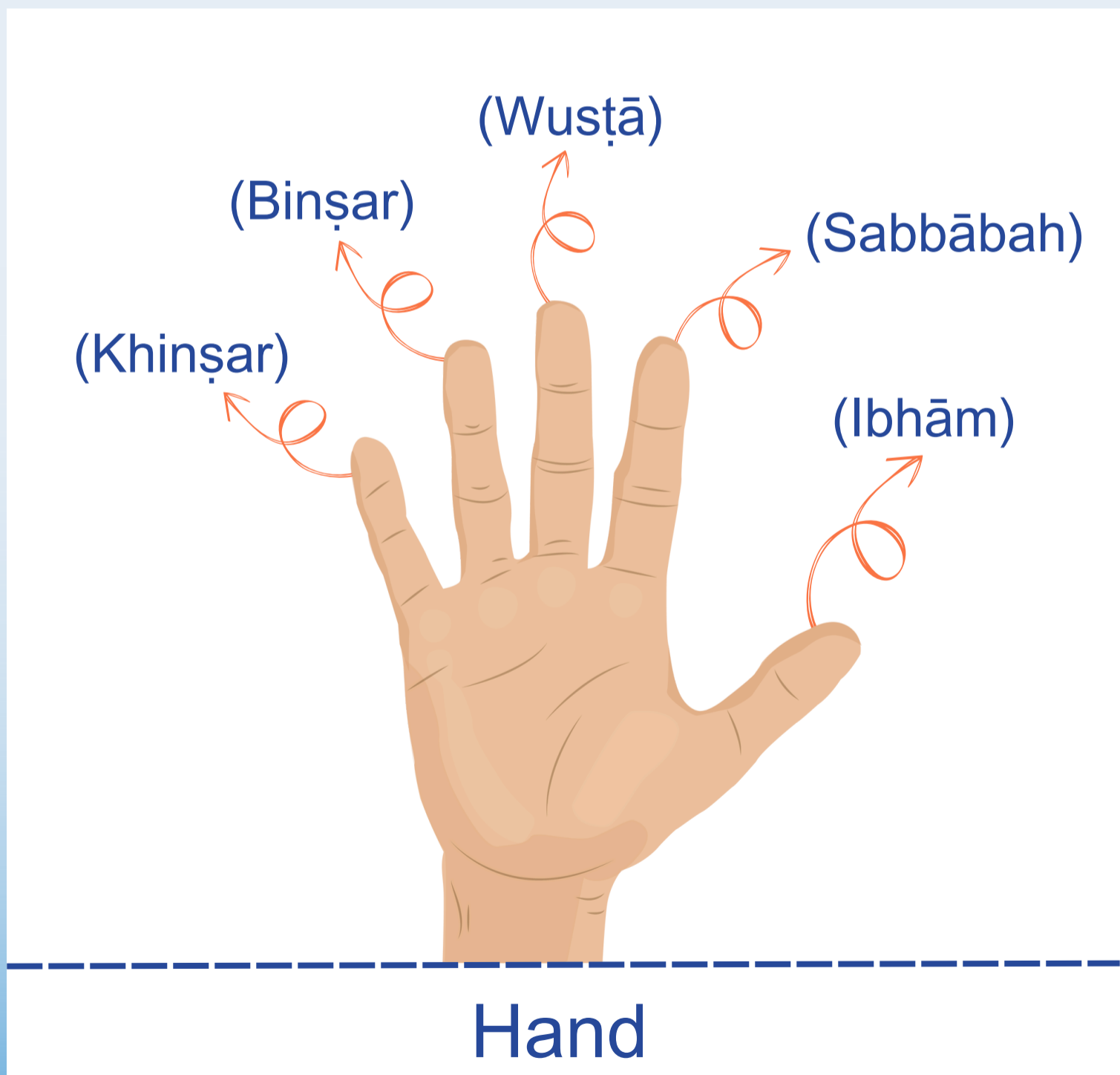
(Khinṣar) - Little finger (Pinky)

(Binṣar) - Ring finger

(Wuṣṭā) - Middle finger

(Sabbābah) - Index finger (Forefinger)

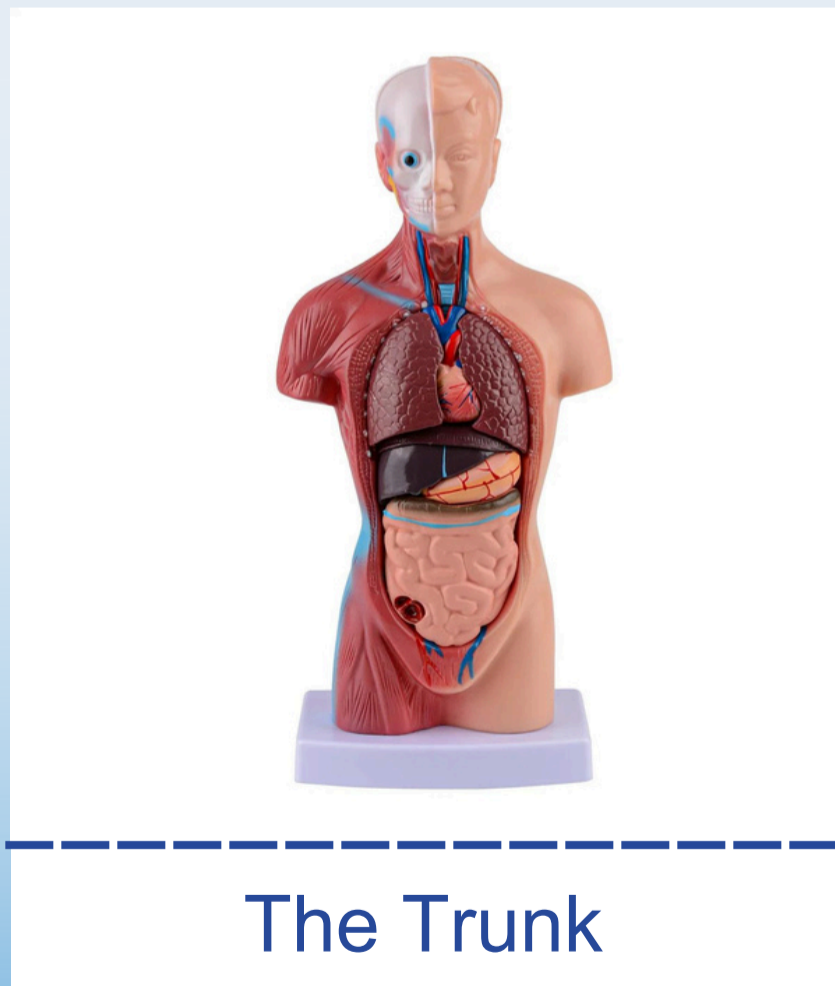
(Ibhām) - Thumb



### 3- The Trunk:

It is the part that supports the head and connects to the limbs.

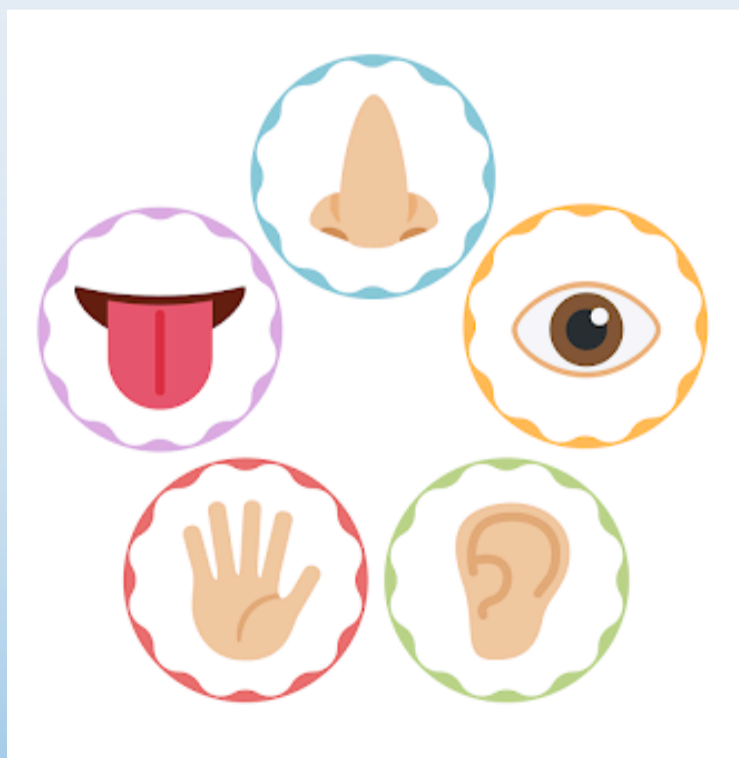
It includes the chest, abdomen, and back. Inside, it contains many organs that are not visible to the naked eye, but they perform vital functions for the body, such as the heart, stomach, lungs, intestines, liver, kidneys, and others.



Allah Almighty has distinguished humans by creating their bodies upright, reaching towards the sky, to set them apart from animals that walk with their heads toward the ground. Blessed be Allah, the best of creators.

### The Five Senses:

Allah created humans and granted them eyes, ears, a nose, a tongue, and skin. Thanks to these, we can enjoy our five senses.



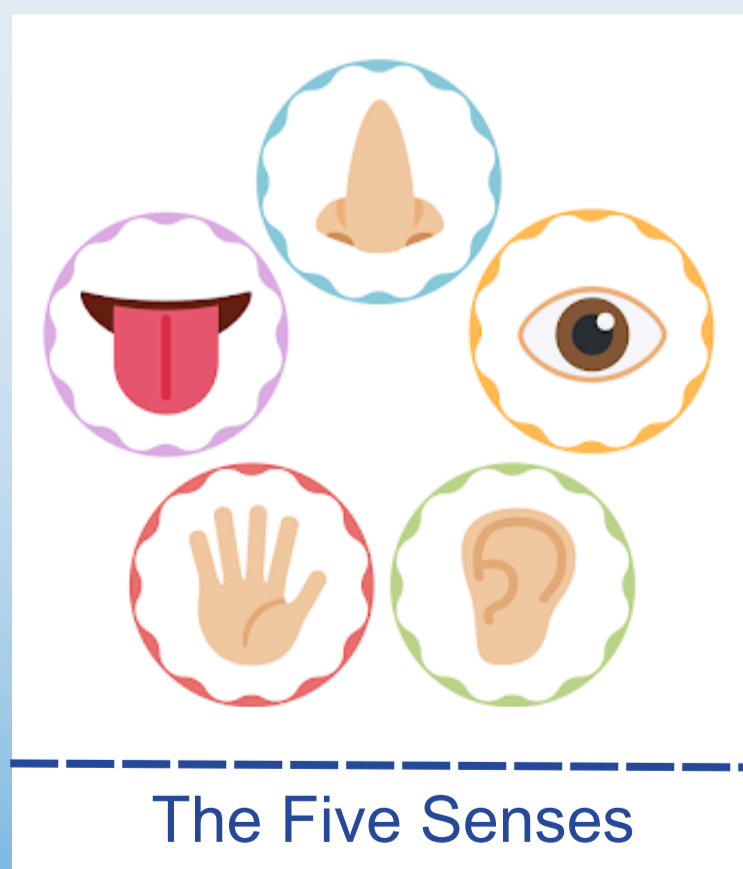
With the **eyes**, we see and enjoy the sense of sight.

With the **ears**, we hear and enjoy the sense of hearing.

With the **nose**, we smell and enjoy the sense of smell.

With the **tongue**, we taste food and enjoy the sense of taste.

Then, with the **skin**, we feel, touch, and sense the nature of things, enabling us to distinguish between rough and smooth, hot and cold, and enjoy the sense of touch.



## Animals:

Allah Almighty created many animals, which are of different kinds and can be divided into three main types:

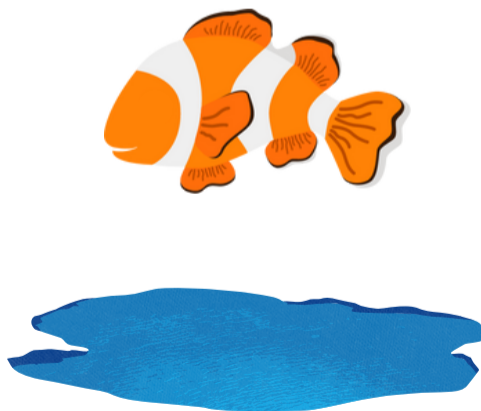
1- **Terrestrial**: These are animals that live on land, such as the horse and the sheep.

2- **Aquatic**: These are animals that live in water, like the sea, rivers, and lakes, such as fish and whales.

3- **Amphibious**: These are animals that live both on land and in water, such as the frog and the crocodile.



Frog



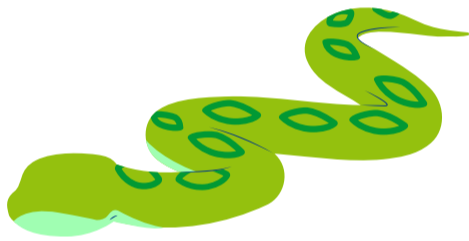
Fish



Sheep

Terrestrial animals are divided into various types:

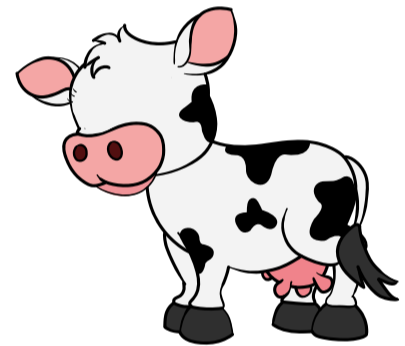
- Some **walk** on feet, such as the lion and the cow.
- Some **fly** with wings, such as the eagle and the sparrow.
- Some **slither**, like the snake and the serpent.



Snake



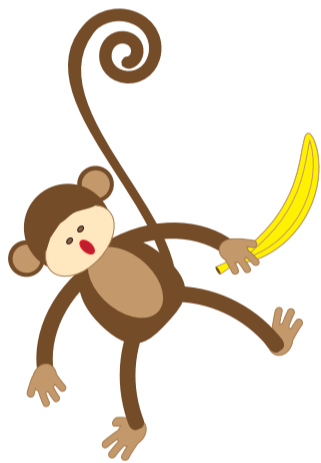
Eagle



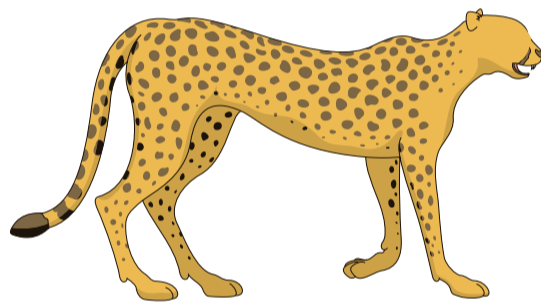
Cow

Animals are also categorized based on their diet:

- Some eat **plants**, like the rabbit and the goat.
- Some eat **meat**, such as the cheetah and the wolf.
- Some eat **both** (plants / meat), like the bear and the monkey.



Monkey



Cheetah

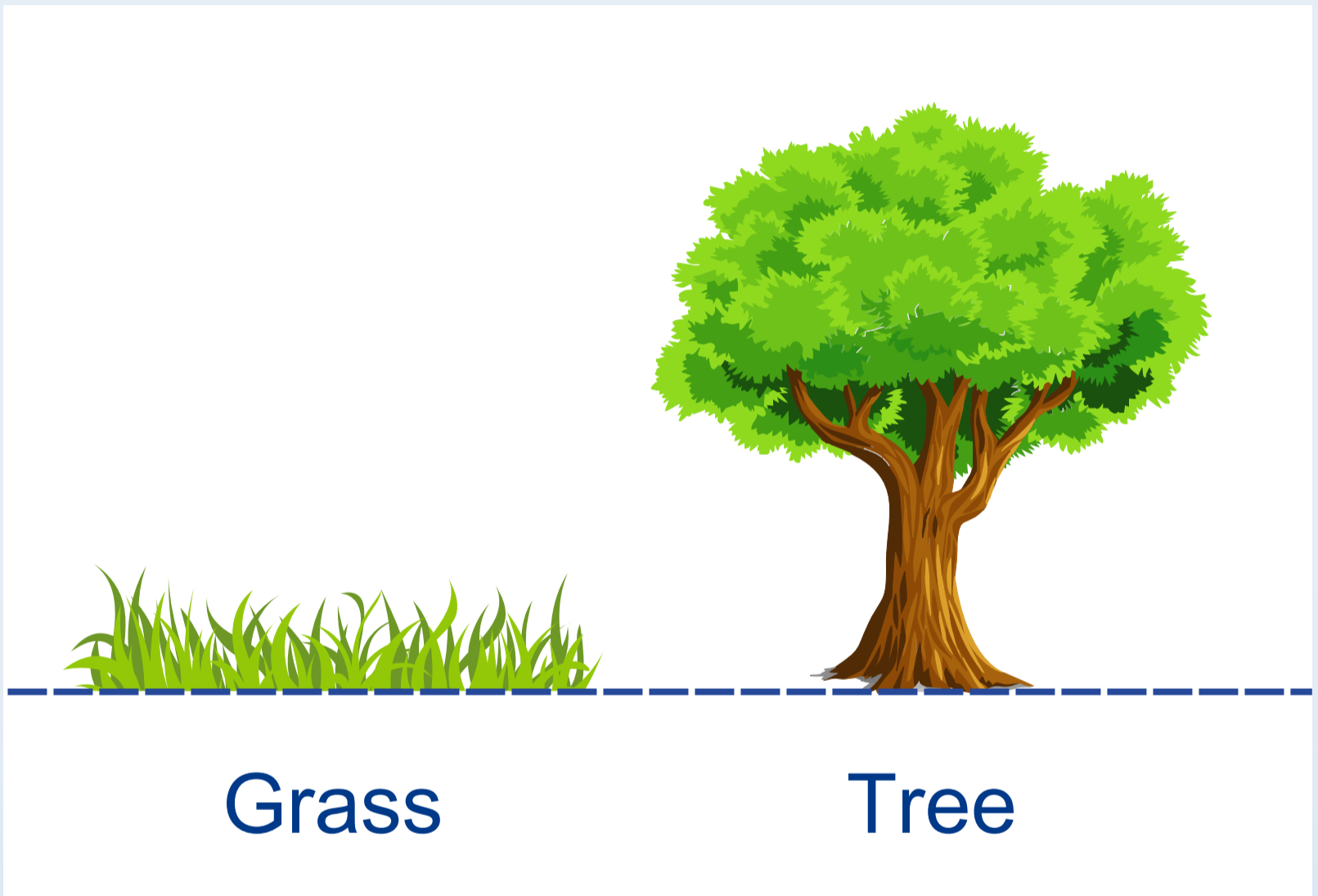


Rabbit

# Plants

There are many types of plants.

Some are **large**, such as trees, and some are **small**, like grasses.



- Plants are divided into two types:

1- **Perennial** Plants: These live for a long time, such as palm trees and pine trees.

2- **Annual** Plants: These have a short lifespan, such as wheat and mallow.



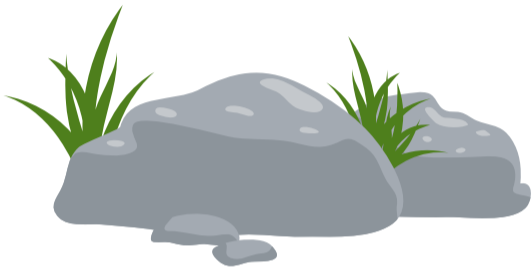
Wheat



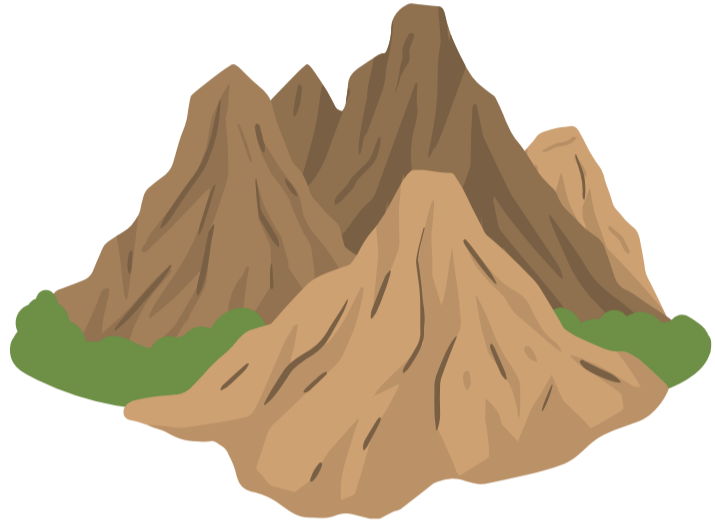
Palms

# Non-living creatures

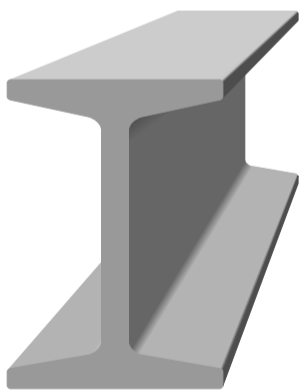
such as: mountains, rocks, water, sand, and iron.



Rocks



Mountains



Iron



Sand

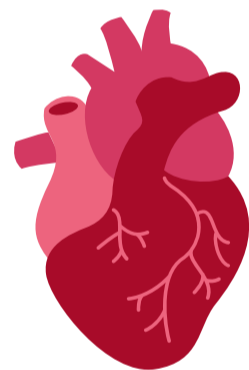
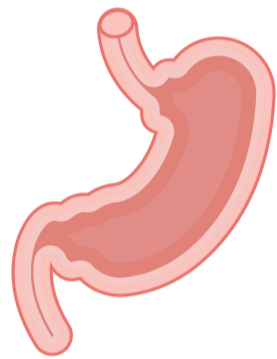
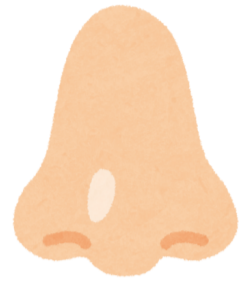
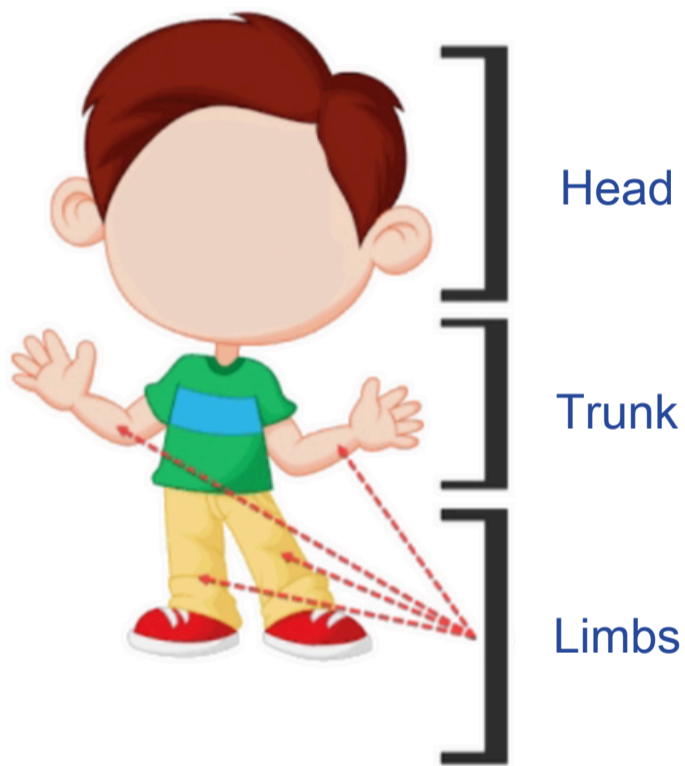


Water

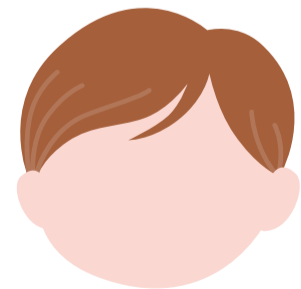
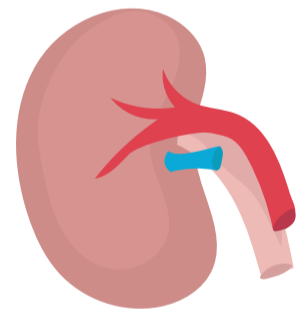
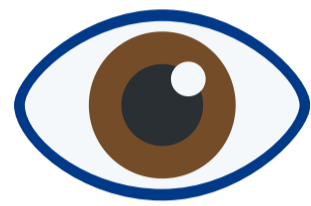
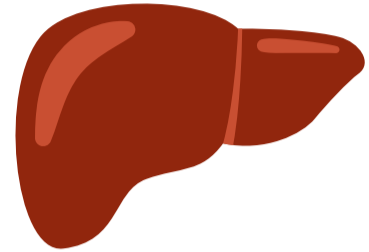
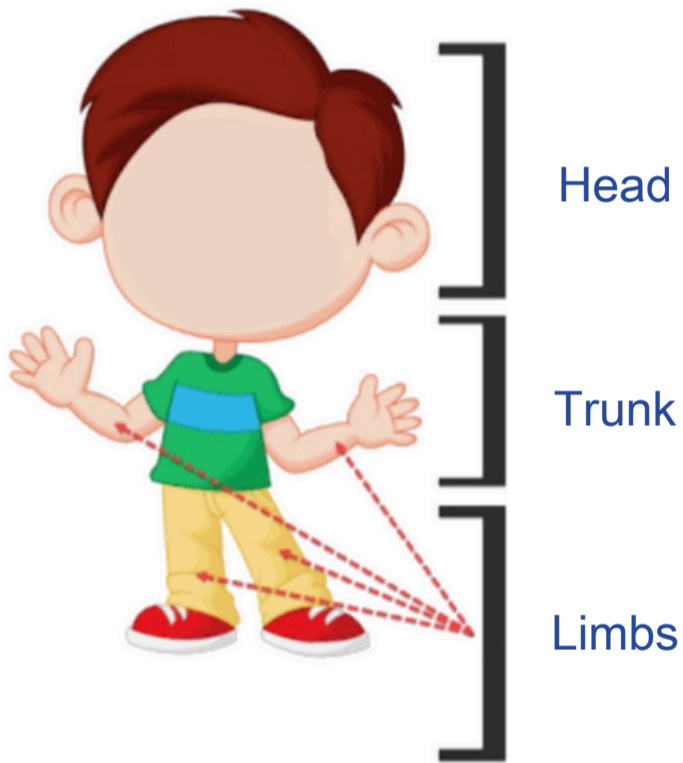
# Exercises



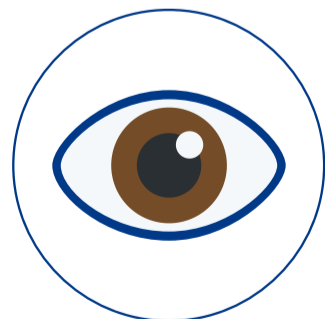
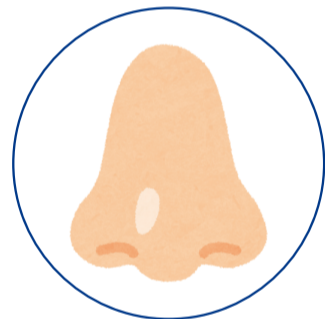
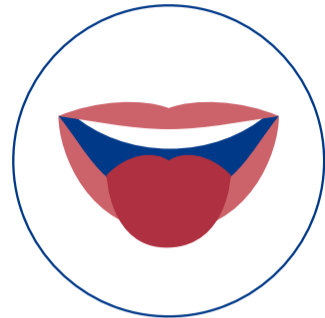
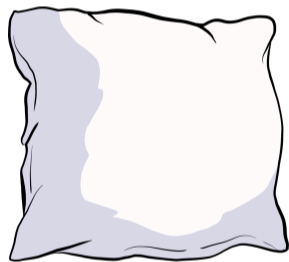
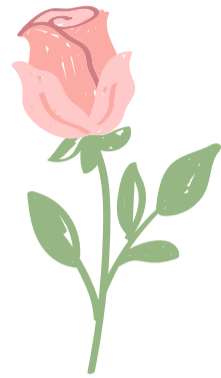
★ Connect each organ to its corresponding part:



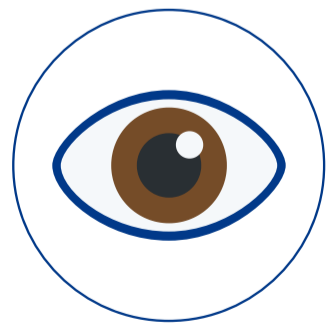
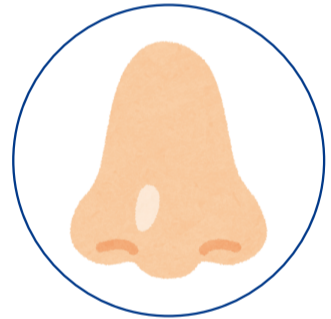
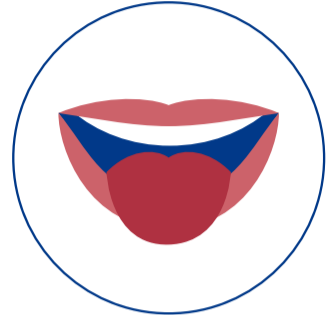
★ Connect each organ to its corresponding part:



★ Connect each image to its corresponding sense:



★ Connect each image to its corresponding sense:



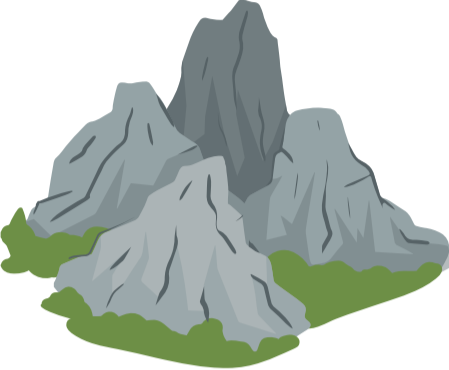






Draw your hand on a piece of paper and color it:


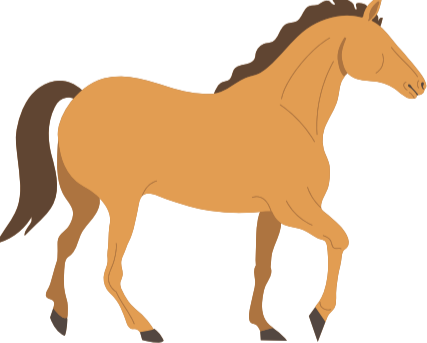
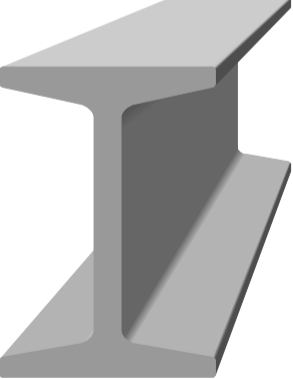




Mark the living organisms:




		


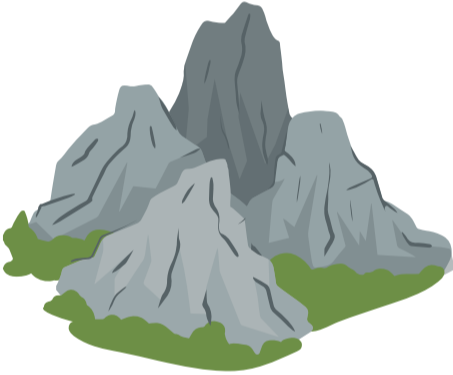
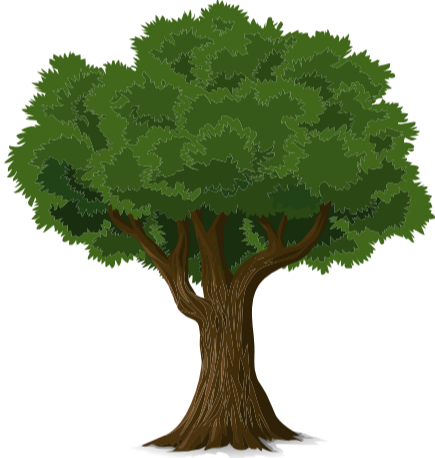
		

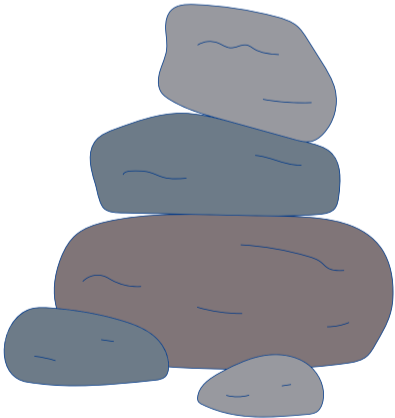

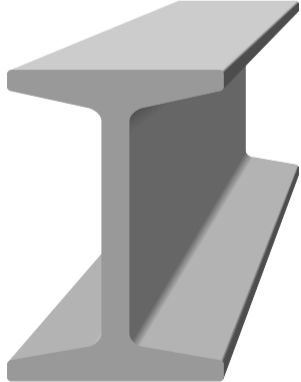
		



Mark the non-living objects:


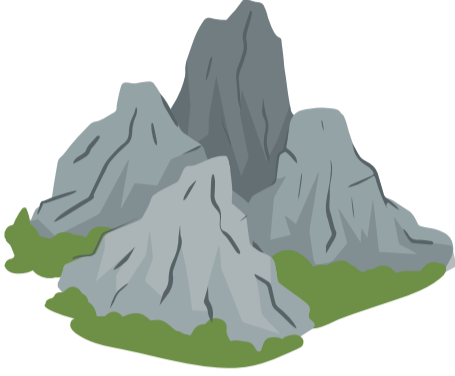
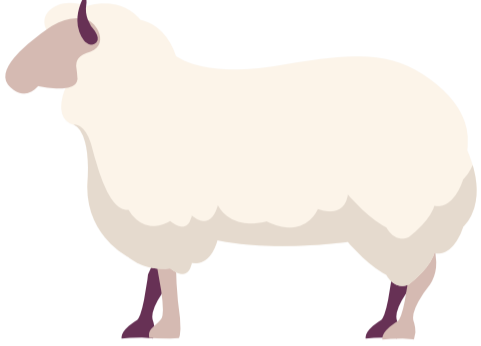
		

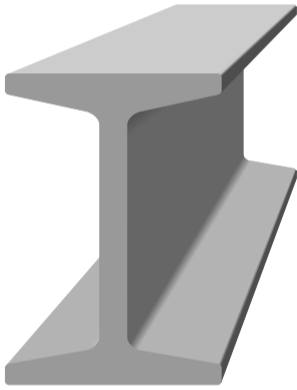


		

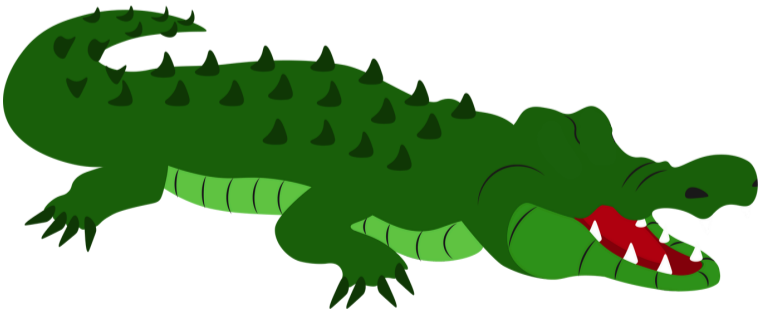
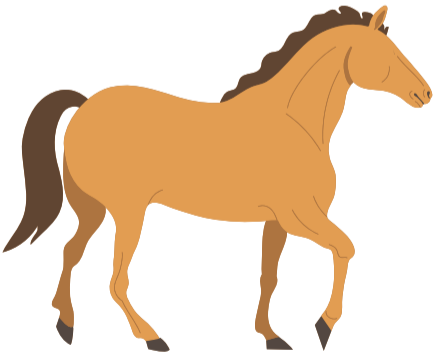
		



Mark the animals:

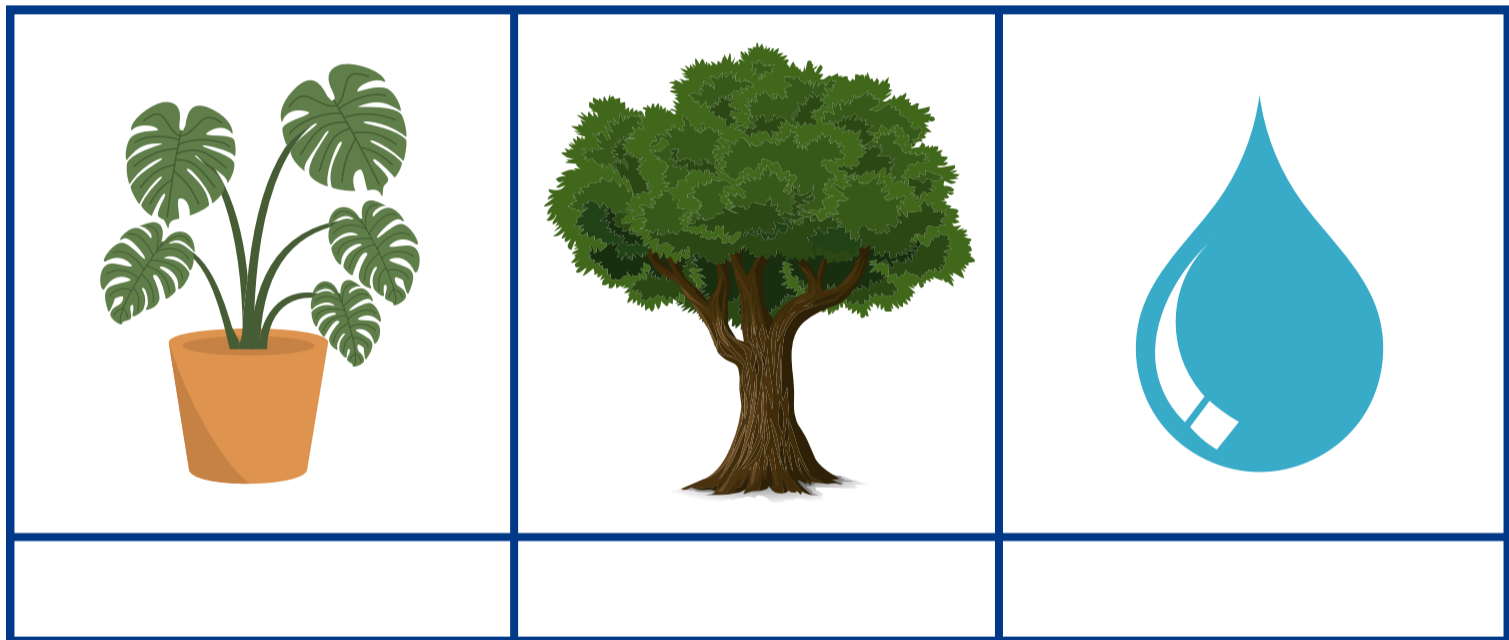
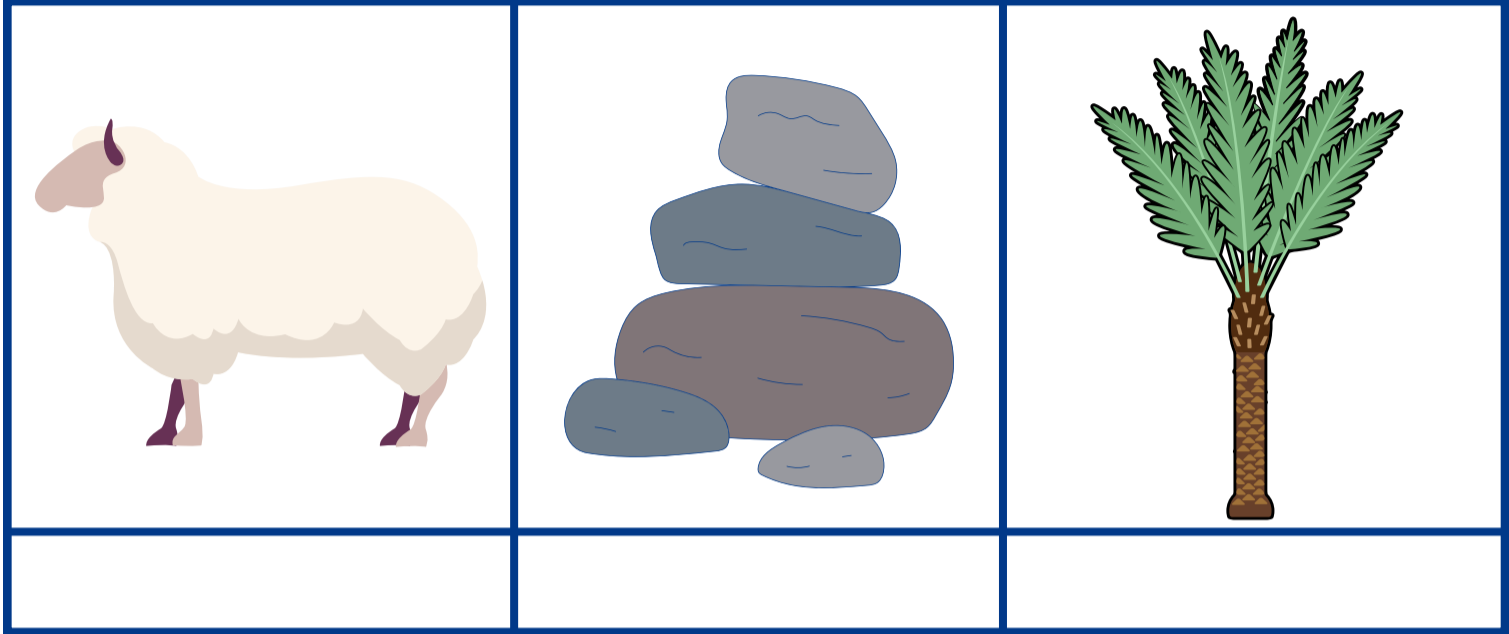
		



Mark the plants:





Match each image to the animal's habitat:



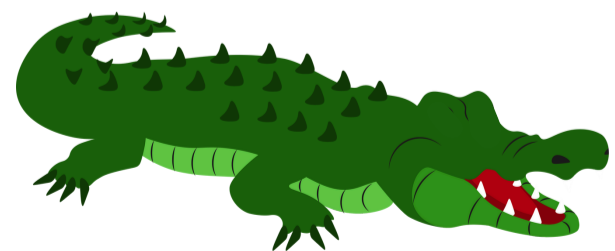
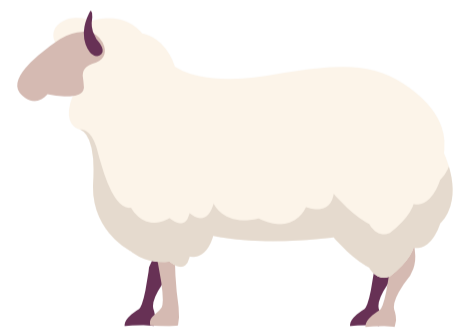
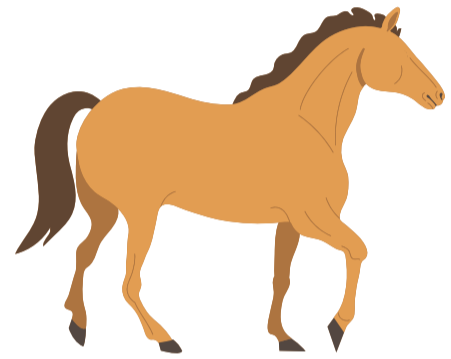
Terrestrial



Amphibious

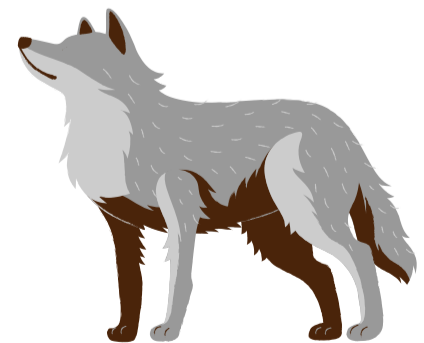
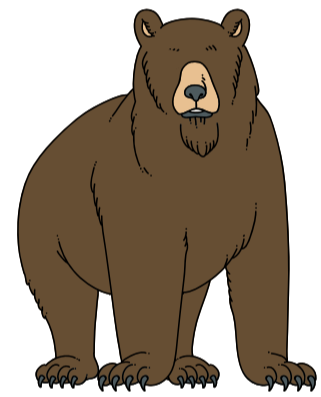
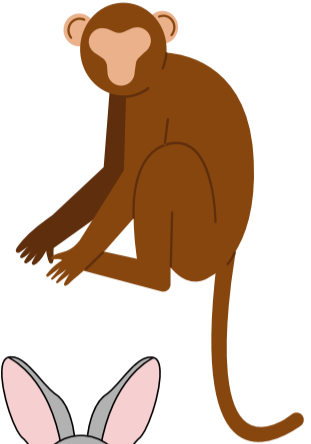
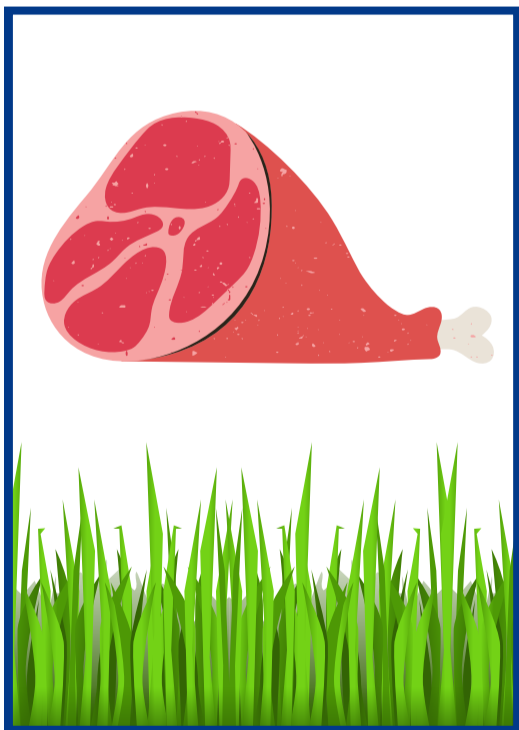
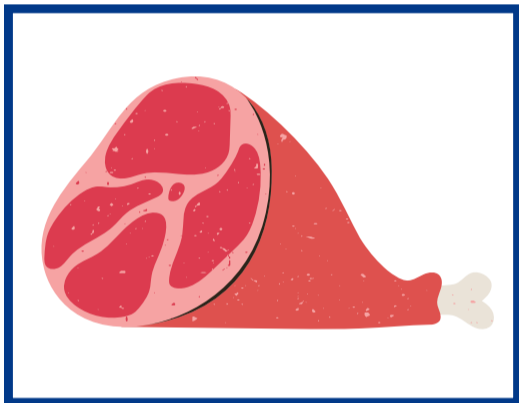
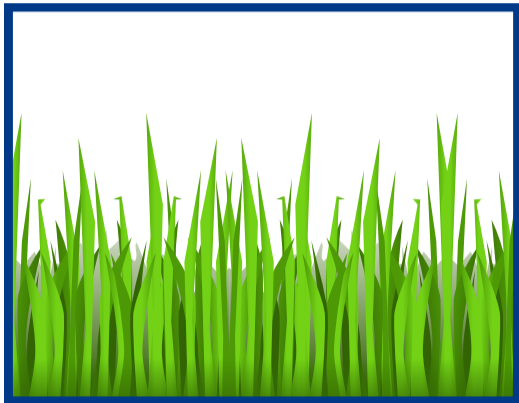


Aquatic





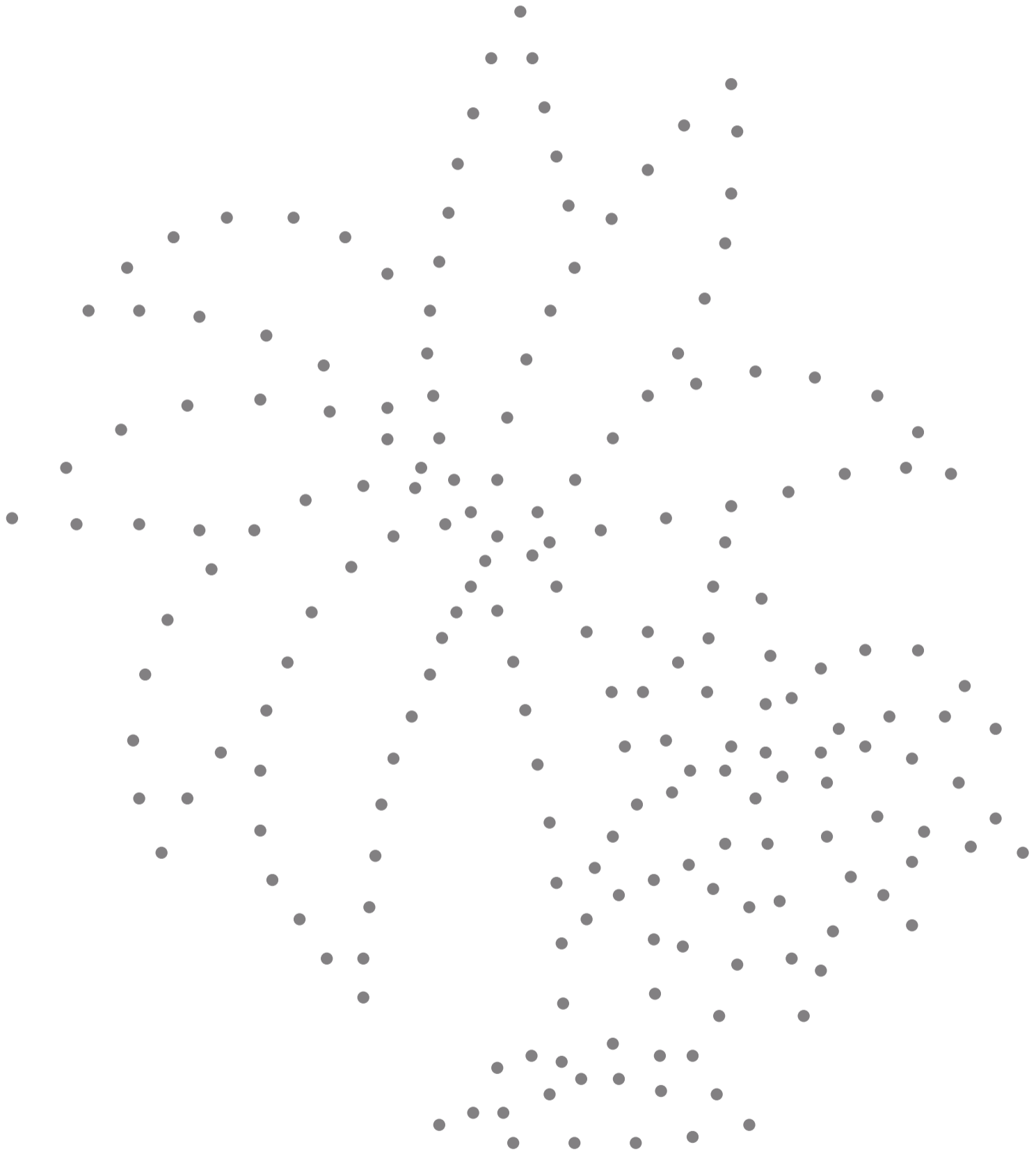
Match each image to the animal's food:



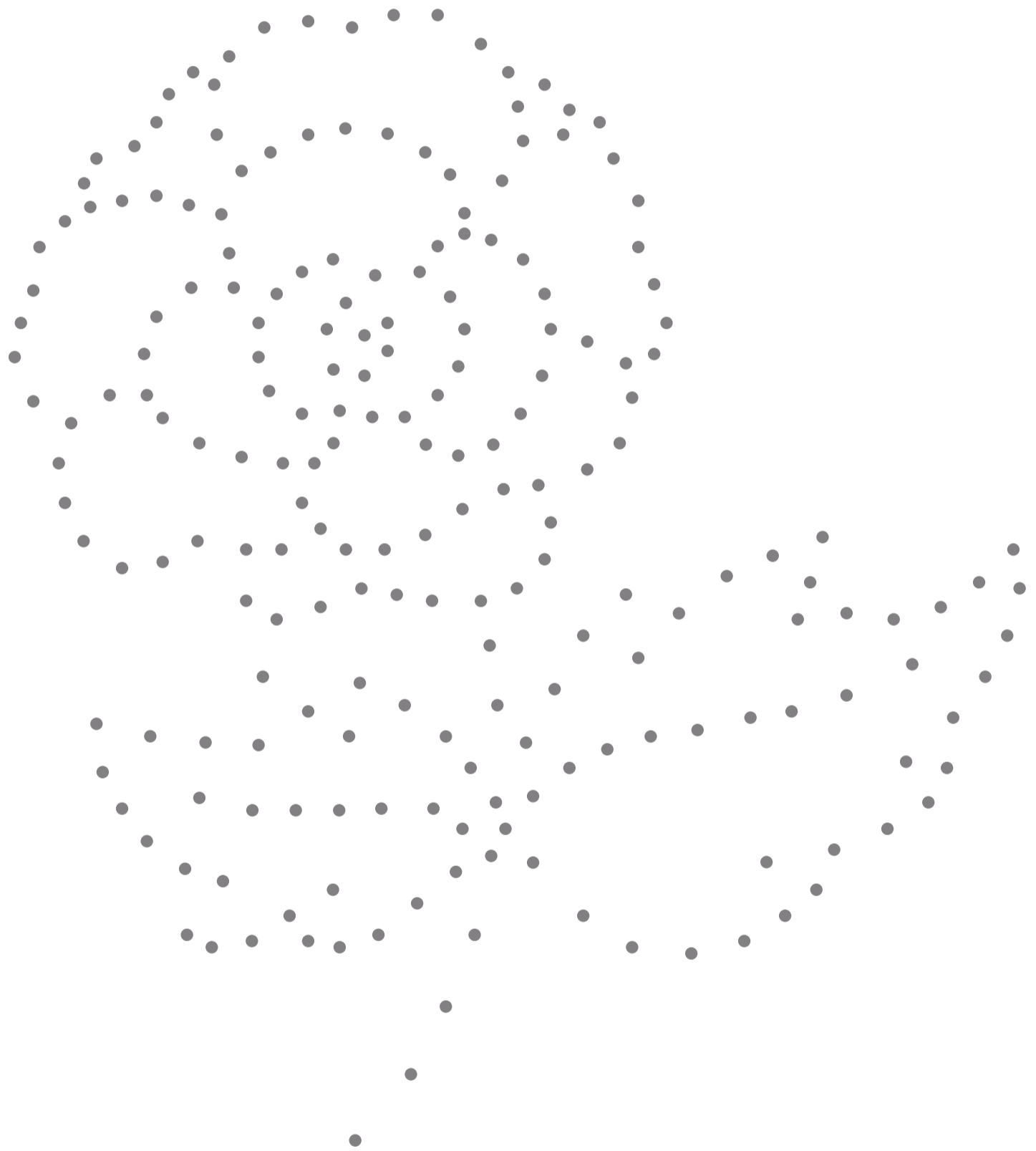


Connect the dots to create a shape, then color it:

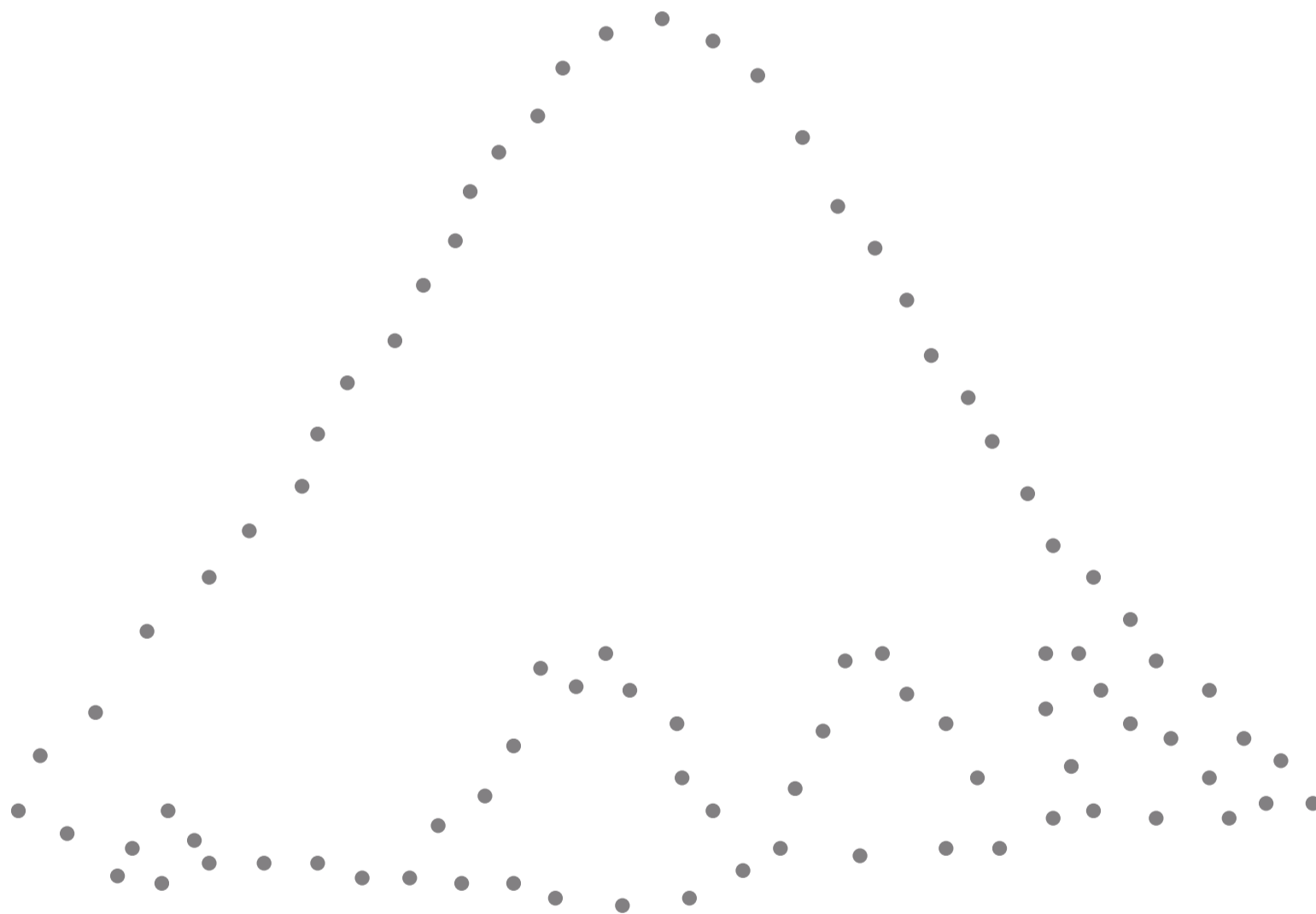
# Palm tree



# Flower



# Mountain



# Clouds



# Crescent





Whenever you see the creations of Allah, say:

'Glory be to Allah and praise Him;  
Glory be to Allah the Almighty.'