



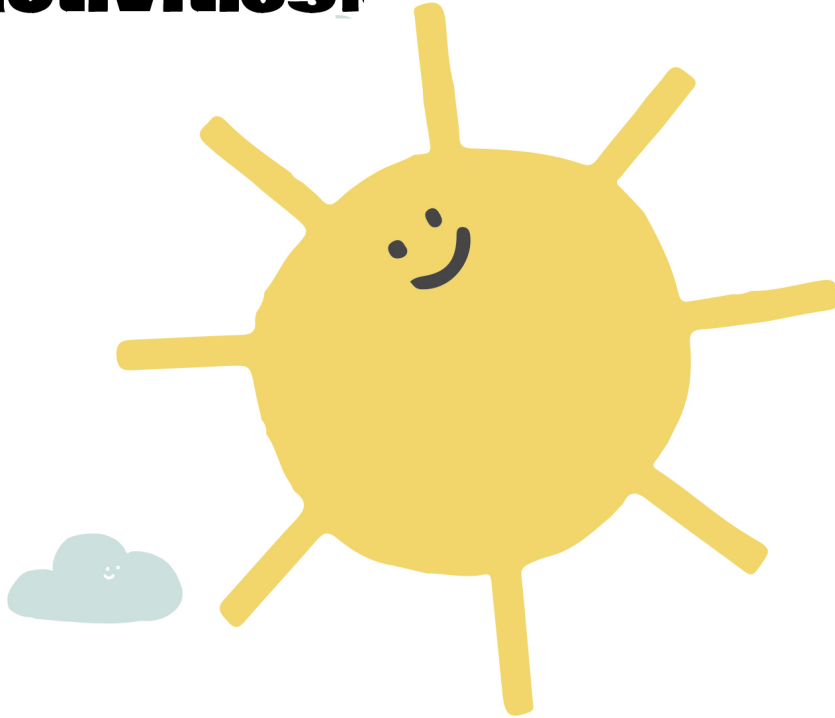
**lives, and it is a blessing from Allah Almighty. We must invest it in everything that benefits us; because if it is lost, it cannot be recovered or compensated for by anything else. The more time passes, the older a person becomes; he turns from a little child to a young man, then a man, then an old man.**



## **HOW IS TIME DIVIDED?**

**Time is divided into days, months, and years.**

**Day: The day begins from sunrise to sunrise the next day, i.e. the day consists of one day and one night. During the day we move, work and do our activities.**



**And at night we sleep. In the day the sun rises, and at night the sun sets, and the moon and the stars appear.**



**The day is divided into specific times:**

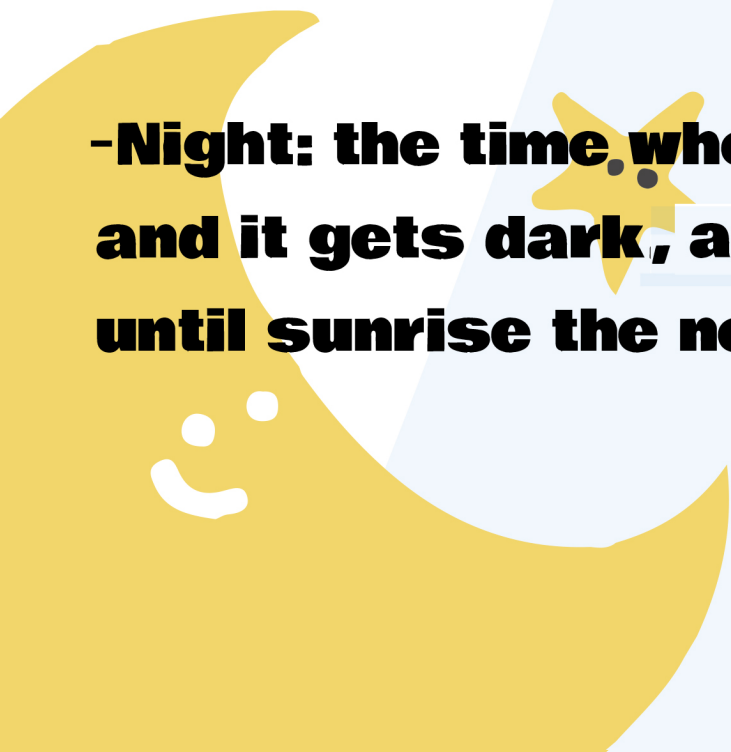
**-Morning: the first time of the day.**

**- Noon: the time when the sun begins to move towards the middle of the sky.**

**-After noon: the time when the sun begins to move from the middle of the sky towards sunset.**

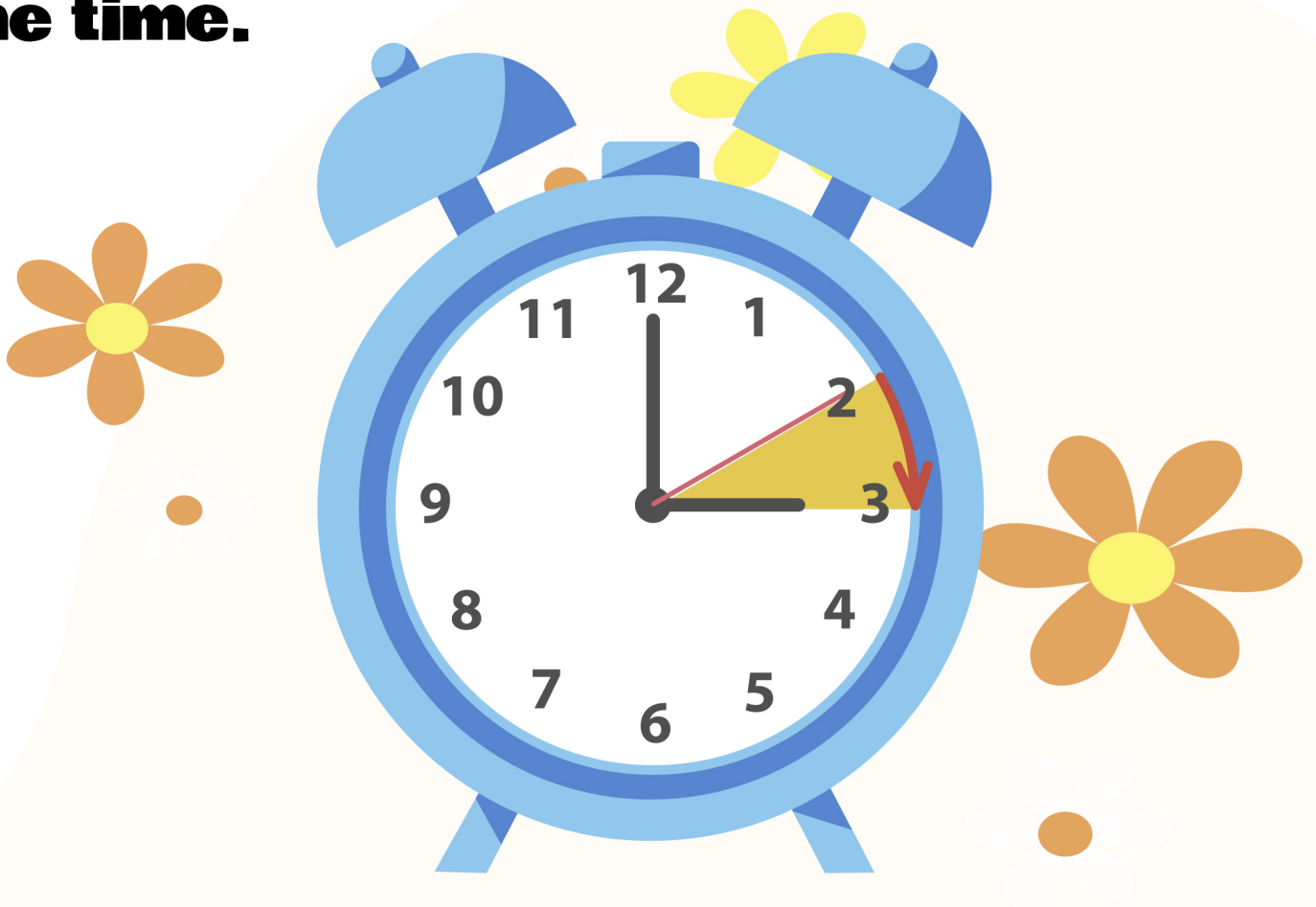
**sunset: the time when the sun sets.**

**-Night: the time when the sun disappears and it gets dark, and continues until sunrise the next day.**



**We can measure a day in hours,  
and one day consists of 24 hours.**

**If you look at the clock, it will tell you  
the time.**



**For Example:**

**We have breakfast in the morning at nine  
o'clock.**

**We have lunch in the afternoon at two  
o'clock.**

**We have dinner in the evening after sunset  
at seven o'clock.**



**The number of hours in the day is 12 hours.**

**The number of hours in the night is 12 hours.**

**There are differences in the hours of the night and day according to the geographical location.**

## **The Month:**

**A month consists of a number of days.**

**A single month has 29 or 30 days.**

**The Year: The year includes 12 months.**

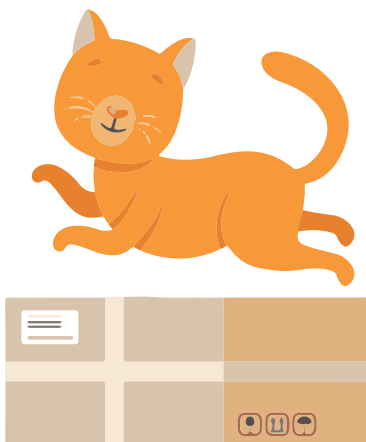
## **Months of the Hijri year:**

**The Hijri months consist of 12 months, which are:**

**Muharram - Safar - Rabi' al-Awwal - Rabi' al-Akhir - Jumada al-Ula - Jumada al-Akhira - Rajab - Sha'ban - Ramadan - Shawwal - Dhul-Qi' dah - Dhul-Hijjah.**



# Fill in the blanks with what suits them and determine where the cat is located.



**Upove**

